



Public Involvement Plan

for the development of the
2045 Puerto Rico Multimodal
Long Range Transportation Plan



1 Introduction

- 1.1 This document describes the Public Involvement Plan for the development of the 2045 Long Range Multimodal Transportation Plan for Puerto Rico. It is based on the principal statements already approve in the MPO PIP; *Public Involvement Plan in the Transportation Planning Process*¹. However, this plan will also take into considerations any requirement established in recent federal and local regulations.

Purpose

- 1.2 As part of the MPO planning process, the Long Range Transportation Plan (LRTP) will require a broad insight from the general public, professional and civic organizations, private companies and key governmental stakeholders. This Public Involvement Plan (PIP) consider various communication methods and identifies key stakeholders that the project should consider during its development.
- 1.3 This document is aligned with the MPO PIP vision, goals and objectives. This PIP has the following:

Vision

Involve and enable agencies, the interested parties and the community to provide meaningful input to the *LRTP*.

Goals

- Consult with the public and stakeholders to gather their ideas for solutions to LRTP;
- Inform and involve the public throughout the process.

Objectives

- Develop an effective, and proactive participation process that includes agencies, stakeholders, interested parties²) and the public, at regional and local level;
- Create communication channels with the public to encourage public participation and obtain input;
- Use of innovative tools and media including utilizing the DTPW's webpage to inform the public of upcoming planning activities; and
- Encourage the participation of minority and low-income populations in the LRTP development process.

¹ Federal joins approval February 18,2014. Revised and approved by the members of the MPO on August 6,2015.

² The FAST Act explicitly adds public ports and certain private providers of transportation, including intercity bus operators and employer-based commuting programs to the list of interested parties that an MPO must provide with reasonable opportunity to comment on the transportation plan.



2 Public Outreach and Communications

Target Audiences

2.1 While the communications across different media seeks to involve residents across the island, targeted efforts will be made to engage a group of stakeholders (Table 2.1).

Table 2.1: Stakeholders

Sector	Level	Entities
Public Sector	Agencies	Ports Authority
		Metropolitan Bus Authority
		Planning Board
		Public Services Commission
		Environmental Quality Board
		Maritime Transportation Authority
		Permissions Management Office
		Department of Environmental and Natural Resources
		Puerto Rico Integrated Transportation Authority
		Transportation and Infrastructure Commission
	Federal	Federal Highway Administration
		Federal Transit Administration
		Environmental Protection Agency
Municipal	Mayors, land-use and transportation planners, and other personnel from the municipalities of the Urbanized and Rural Areas	
Regional	Regional Council	
Private Sector	Interested and affected parties	Private providers
		Trucking Freight Industry
		Private Paratransit Operators
		Airports
		Professional Groups
NPO	Interested	Elderly and people with disability organizations
		Environmental organizations
Public	Affected	Bicycle and pedestrians
		Minority and low-income populations
		Students
	Interested	Transport users



2.2 A series of meetings will be undertaken with specific committees covering most of the stakeholders:

- Project Management Office (PMO):** The project management team consist of the SDG team and the key personnel assigned by the SPO. It will meet at least twice a month to provide guidance and insight to the project team, monitor the progress and support compliance with schedule.

Table 2.2: Project Management Office Members

Office
PRHTA Project Manager
PRHTA Office
SDG Project Coordinator

- Advisory Committees (AC):** The main objective of the ACs is to integrate under-represented populations, interest parties as well as professionals, academia, and public agencies that could contribute to the discussion adding elements concerning their group or expertise. These committees are: Citizen’s Advisory Committee (CAC), and Government Advisory Committee (GAC).
- Citizen’s Advisory Committee (CAC)

Table 2.3: Citizen’s Advisory Committee Members

Represented Sector	Organization
Elderly population	Puerto Rico Office of the Ombudsman for the Elderly
	American Association of Retired Persons (AARP)
People with disabilities	Puerto Rico Office of the Ombudsman for People with Disabilities
Environmental Justice (Communities)	Center for Volunteer Development
Professionals Organizations	Puerto Rico Planners Society
	Institute of Transportation Engineer (ITE-PR)
	Economist Association
	Puerto Rico Professional College of Architecture and Landscaping Architecture
Logistics	PR Shipping Association
	Civil Engineer Department – UPRM
Universities	Graduate School of Planning – UPRRP
	Civil Engineer Department – UPRR
Non-motorized	Mobility Advisory Council



- Government Advisory Committee (GAC)

Table 2.4: Government Advisory Committee Members

Office/Area
PRHTA Project Manager
SDG Project Coordinator
UZAs Representatives
TMA's Representatives
Planning Board
Ports Authority
Metropolitan Bus Authority
Puerto Rico Integrated Transportation Authority
Maritime Transportation Authority
Tren Urbano
Public Private Partnership Authority
Puerto Rico Infrastructure Financing Authority
Public Services Commission
PRIDCO
Puerto Rico Economic Development Bank
Puerto Rico Statistics Institute

- **Technical Committee (TC):** SDG and PRLRTP Managers and key members representing PRHTA technical areas. This Committee had been appointed by the PRHTA's Executive Director, and its members are the following:

Table 2.5: Technical Committee Members

Office/Area
PRHTA Project Manager
SDG Project Coordinator
Strategic Planning Office
6FHWA Liaison Office
FTA Liaison Office
Data Collection and Traffic Analysis Office
GIS Office
Project Programming Office
Traffic Engineer Office
Puerto Rico Integrated Transportation Authority
Soil Engineer Office
Bridge Program
Highway Safety Program



This committee will meet every 2 months to discuss general technical issues and assumptions within the project mostly related to the process of project prioritization, and revision of technical papers.

Additional to this Technical Committee there will be 4 subcommittees that will meet as needed to discuss specific topics, these are:

- Freight Committee: will focus on the issues of freight mobility for Puerto Rico.

Table 2.6: Freight Committee Members

Sector	Office/Area
Government	PRHTA Project Manager
	PRHTA SPO Office
	PRHTA Salinas Toll Station
	PRHTA Programming and Environmental Affairs
	Field Operation PR Police
	Highway and Traffic PR Police
	PR Ports Authority
	Public Services Commission
	Mayaguez Port
	Puerto Rico Trade and Export Company
Private	Federal Motor Carrier Administration
	Planning Board – Subprogram of Economic Analysis
	PR Shipping Association
	PR Industrial Association
	PR Retail Trade Association
	PR Chamber of Commerce
	MIDA



- Resilience Transportation Infrastructure Committee: will focus in ensuring that the topic of resilience is properly attended and represented in the Plan.

Table 2.7: Resilience Transportation Infrastructure Committee Members

Office/Area
PRHTA Project Manager
PRHTA employees from regional offices
PR Climate Change Commission representative
Internal leader of this Committee
PRHTA SPO Office
Puerto Rico Emergency Management Agency
SDG Project Coordinator

- Socioeconomic Committee: will work on discussing forecast of economy, population and employment in Puerto Rico.

Table 2.8: Socioeconomic Committee Members

Office/Area
PRHTA Project Manager
SDG Project Coordinator
SDG Socioeconomic Forecasting Expert
Advantage Business Consulting

- Financial Committee: will have the responsibility of prioritizing and identifying the funding available for the different projects.

Table 2.9: Financial Committee Members

Office/Area
PRHTA Project Manager
Auxiliary Executive Director of Administration and Finance (or delegate)
Finance Director (or delegate)
SDG Project Coordinator
SDG Finance Expert
Advantage Business Consulting

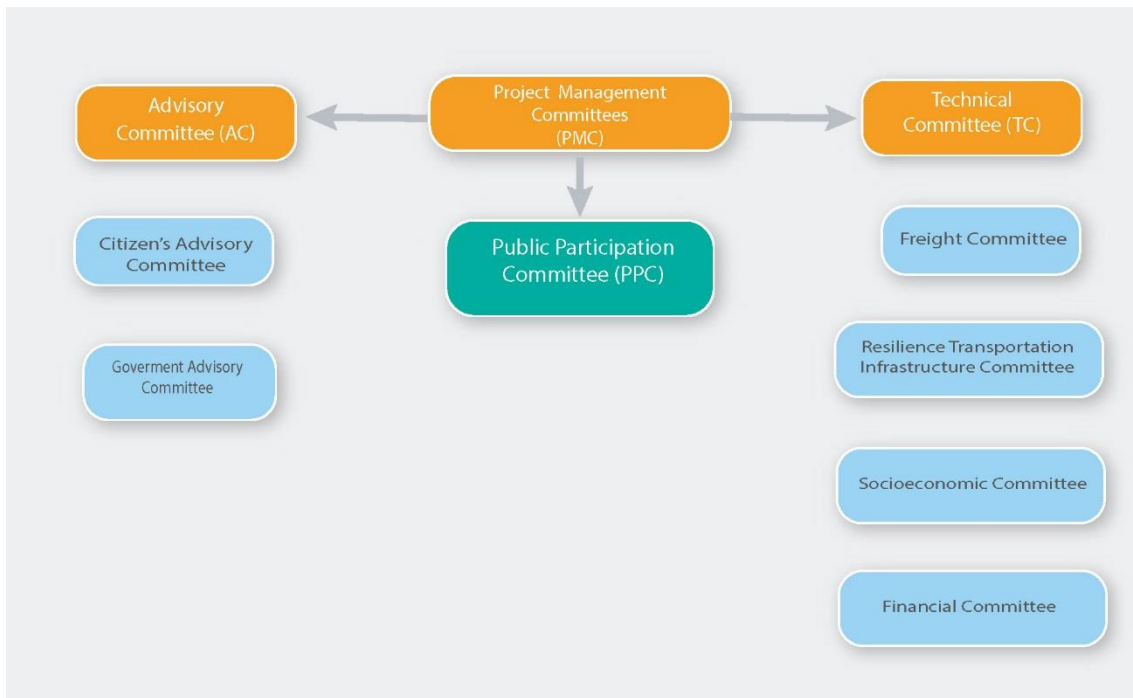
- **Public Participation Committee (PPC):** This committee is responsible of implementing and updating this PIP. It is also responsible of promoting and facilitating the participation of representatives of local agencies, private’s entities related to transportation, community organizations and the general public, as well as to assure that the interested and social, economic and environmental concerns of the community are being considered in the planning process.



Table 2.10: Public Participation Committee Members

Office
PRHTA Project Manager
PRHTA Public Involvement Expert
SDG Project Coordinator
SDG Public Involvement Experts

Figure 2.1: LRTP Stakeholders Committees



Outreach and Communications Strategy

- 2.3 The strategy outlined below will inform and solicit crucial input from various stakeholders at appropriate times in the process. The multi-pronged approach will engage a broad cross-section of stakeholders while simultaneously working closely with a core group of interested.

Recurrent meetings

Project Management Committee

- 2.4 The project contemplates having biweekly meetings with the Project Management from the PRHTA team to monitor the project development and obtain information crucial to the project.

Advisory Committees

- 2.5 The Advisory Committee will participate in 4 meetings in order to provide their opinions on the development of the projects in order to have a Plan and a Guide responsive to the realities.



Technical Committee

- 2.6 The Technical Committee will participate in 4 meetings in order to provide their opinions on the development of the projects in order to have specific support from technical experts from the PRHTA and specifically on subjects related to freight, reliance, socioeconomics and finances.

Stakeholders meetings

- 2.7 As needed, additional meetings will be set up with other stakeholders.

Open Houses

- 2.8 While all aspects of community engagement and outreach are important, nothing can replace an open community forum where individuals can come and hear information about the study process and as well provide inputs regarding their specific needs and concerns.
- 2.9 We propose to have two sets of Open Houses; the first round will happen in December 2017 and the second one in March 2018.
- 2.10 In the first round, we will educate people about the LRTP and ask people about their mobility needs. Hurricane Maria affected Puerto Rico's transportation infrastructure and probably made a significance change on people's regular trips, in this Open House we will focus on gather input on how this situation its changing those people's trips and where are the most affected areas.
- 2.11 During the second round of open houses we will inform people on the progress of the LRTP and will validate their opinion regarding the proposed scenarios to be tested as part of the LRTP.

Interactive Engagement

- 2.12 Through a clear and coherent digital strategy, that will include a project website and email blasts, the project team will enable stakeholders to participate in the project 24/7. The online effort will be regularly maintained with targeted efforts coinciding with key decision milestones



3 Public Involvement Documentation

- 3.1 Throughout the project, all public involvement activities will be coordinated with the PRHTA/SPO and their participation will be of key importance to success. All activities will be documented; this will include meeting summaries, contact databases and comment databases.

